

A01 IDC SOCKET

PITCH: 2.54mm

SPECIFICATIONS

Material

Insulator : PBT, glass reinforced, rated UL 94V-0

Contact : Phosphor Bronze or Brass

Electrical

Current Rating : 1 Amp DC

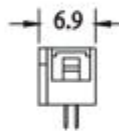
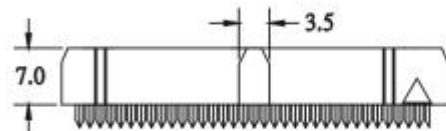
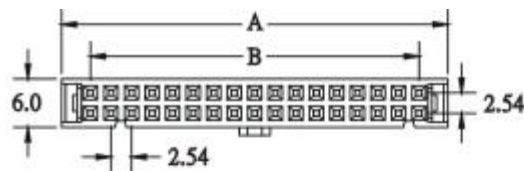
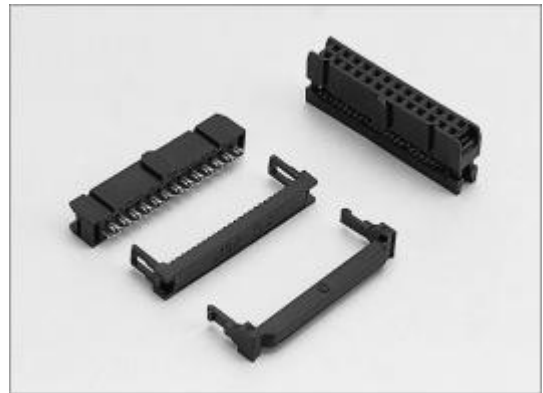
Contact Resistance : 30 mΩ max.

Insulation Resistance : 3000 MΩ min.

Dielectric Withstanding Voltage : 500V AC for 1minute

Operating Temperature : -40°C to +105°C

- ♦ Terminated with 1.27mm pitch flat ribbon cable.
- ♦ Mating Suggestion : C01a, C02a, C03 & C04 series.



POSITION	A	B
6	12.18	5.08
8	14.72	7.62
10	17.26	10.16
12	19.80	12.70
14	22.34	15.24
16	24.88	17.78
20	29.96	22.86
24	35.04	27.94
26	37.58	30.48
30	42.66	35.56
34	47.74	40.64
36	50.28	43.18
40	55.36	48.26
44	60.44	53.34
50	68.06	60.96
56	75.68	68.58
60	80.76	73.66
62	83.30	76.20
64	85.84	78.74

HOW TO ORDER:

A01 - 1 - 2 - 3 - 4 - 5

1.NO. OF CONTACT	2.CONTACT MATERIAL	3.CONTACT PLATING	4.SPECIAL FUNCTION	5.INSULATOR COLOR
06 08 10 12 14 16 20 24 26 30 34 36 40 44 50 56 60 62 64	A: BRASS B: PHOSPHOR BRONZE	T: TIN PLATED S: SELECTIVE G: GOLD FLASH A: 5u" INCH GOLD B: 10u" INCH GOLD C: 15u" INCH GOLD D: 30u" INCH GOLD	A: W STRAIN RELIEF W BAR B: W/O STRAIN RELIEF W BAR C: W STRAIN RELIEF W/O BAR D: W/O STRAIN RELIEF W/O BAR	1. BLACK 2. GREY