

7334L2622F13LF

Lead Free Version (Optional)

Plating : contact area
 2: 0.4 µm Gold
 5: 2.0 µm Gold

Number of contacts :
 2: 8 contacts ISO
 3: 16 contacts ISO + AFNOR

GENERAL:

This L26 connector uses a "sliding" contact technology suitable for most applications. It has been designed for easy mounting on the PCB.

ELECTRICAL PROPERTIES:

Insulation resistance : 5000 MΩ min
 Dielectric withstanding : 750 Vrms min
 Current carrying capacity : 10µA min. 1A max
 Contact resistance : 100mΩ max
 Card sensor type : Normally closed

MECHANICAL PROPERTIES:

Contact Normal force : 0.6 N max (EMV Standard)
 Insertion force : 10 N max
 Extraction force : 1 N min
 Durability : 10000 card insertions with 0.4µm Gold
 According to UTE C93-421

MATERIAL:

Housing : PBT 30 % Glass Filled, Colour Black, Rated UL94V0
 Contacts and switch : Phosphor bronze
 Plating : Nickel all over with 3µm mini on contact area
 Gold on contact area : see catalogue part number key
 Tin/Lead 3 µm mini on soldertails
FOR LEAD FREE PLATING :
 Matte Tin 3µm mini on solder tail in place of Tin/Lead
 Bare edge allowed

ENVIRONMENT:

Operating temperature: -20°C / +70°C
 Storage temperature: -40°C / +85°C
 Printed Circuit Board thickness : 1.6mm

REFERENCE DOCUMENTS:

Product specification VGN 11596
 Packaging Specification VGN 11619

LEAD FREE VERSION:

"This product meets European Union Directives and other country regulations as described in GS-22-008"

The housing will withstand exposure to 260°C peak temperature for 10seconds in a wave solder application with a 1.6mm minimum thick circuit board. Use protective adhesive tape (Kapton or Teflon) or protective metallic devices on the areas which are directly exposed to wave soldering as it is used in classical leaded wave soldering

EUROPEAN PROJECTION

| | | | |
|----------------------|----------------------|---|----------------|
| www.fciconnect.com | | surface <input checked="" type="checkbox"/> tolerance ISO 406 ISO 1302 ISO 1101 | projection mm |
| Dr | DILIPTHOMAS 02.04.30 | Product family | 5S2F |
| Eng | F TISSERAND 02.04.30 | Spec ref | SEE NOTES |
| Chr | N.TWENCY '05/05/10 | Material | SEE NOTES |
| Appr | KS '05/05/10 | ECN | 105-0071 |
| title L26 TYPE F13 | | dwg no VJW_54825 | Rev. C |
| catalog no See Table | | CUSTOMER COPY sheet 1 of 2 | |

General Tolerances: ± 0.2 mm

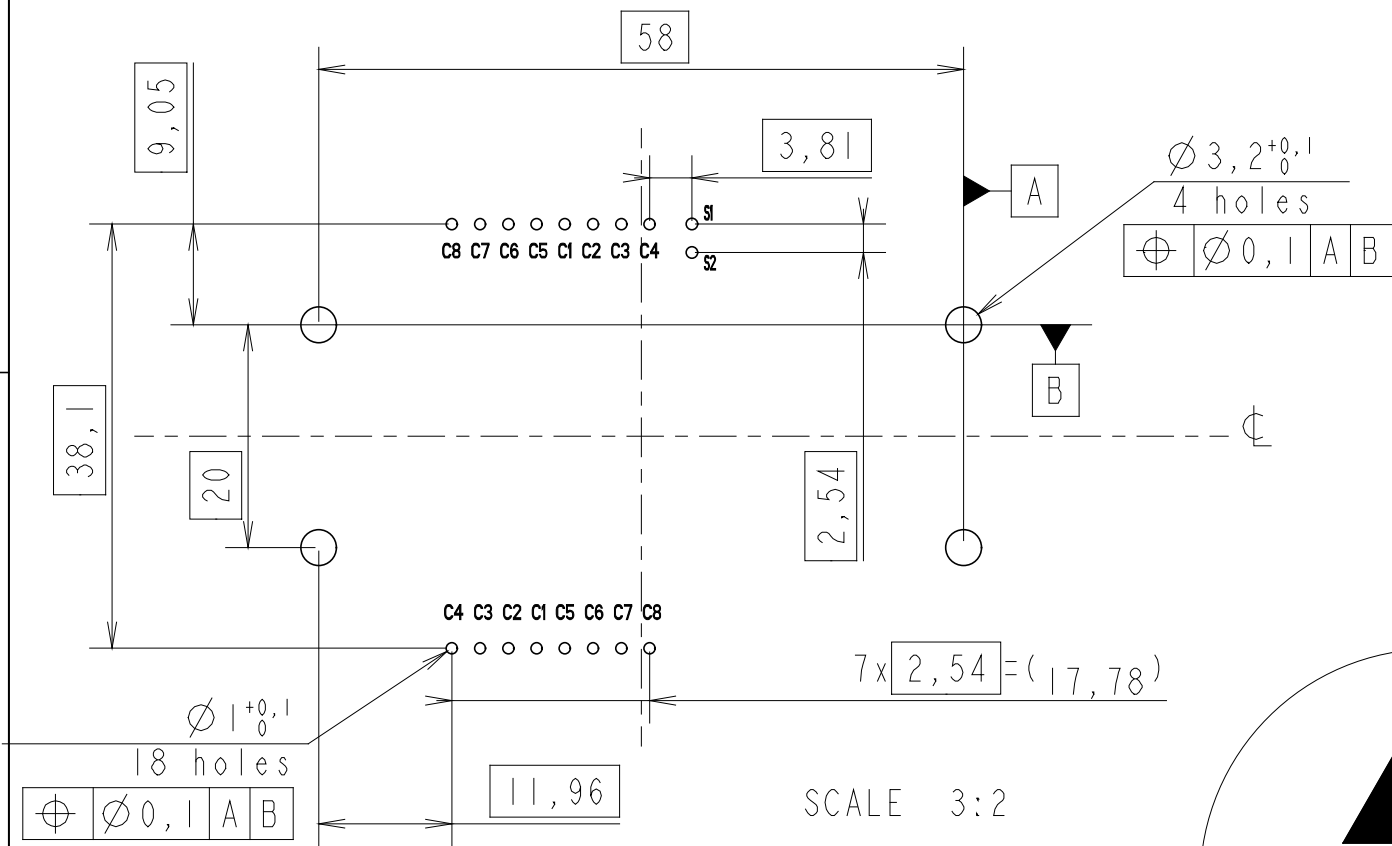
Tous droits réservés. Reproduction ou communication de ces plans interdite sans autorisation écrite de FCI.

FCI

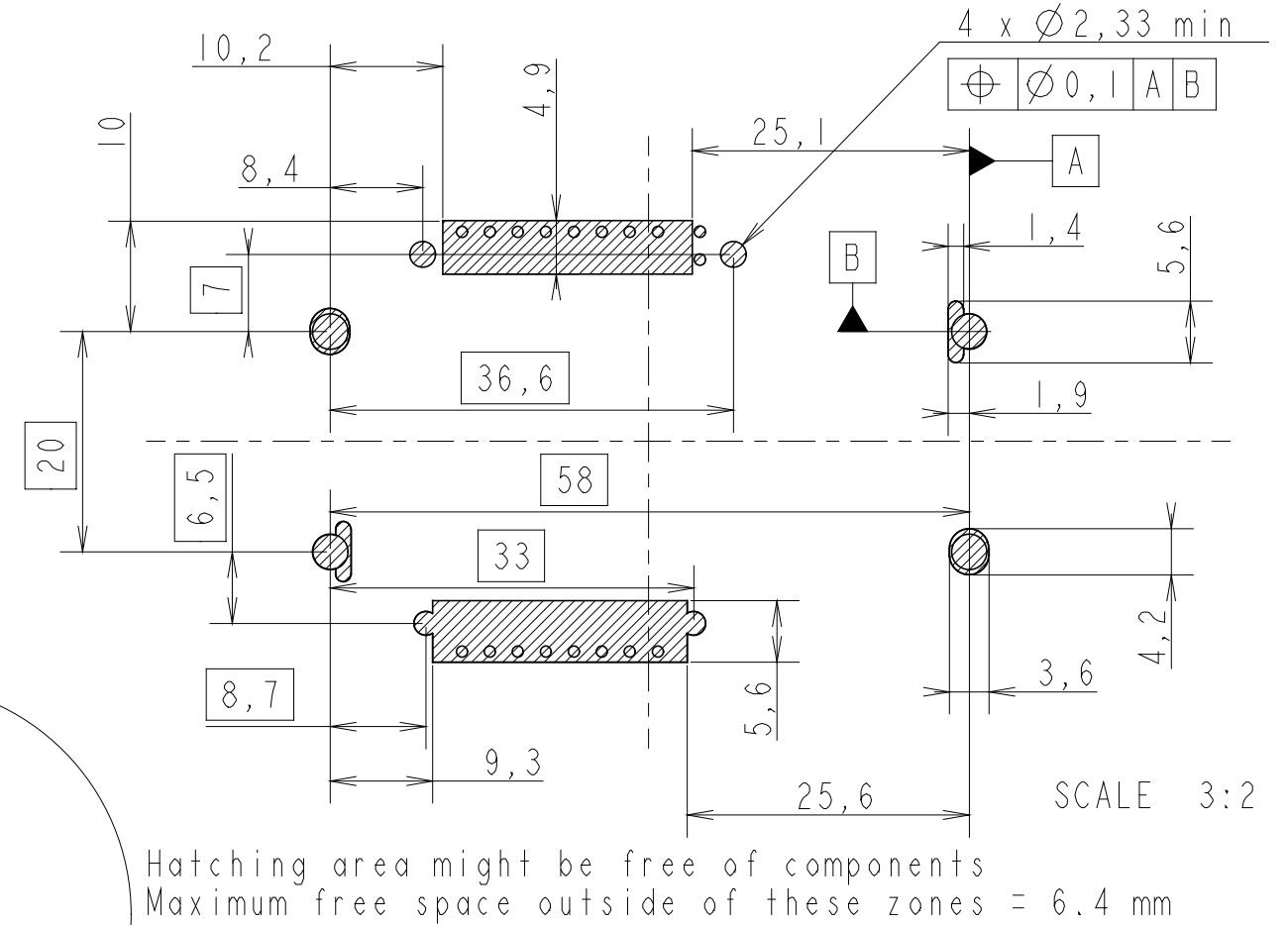
All rights reserved. Reproduction or communication in any form without written authority from the proprietors. Property of FCI. Copyright FCI.

Tous droits strictement réservés. Reproduction ou communication à des tiers interdite sous quelque forme que ce soit sans autorisation écrite du propriétaire. Propriété de c FCI. Droits de reproduction FCI.

RECOMMENDED PCB LAYOUT CONTACT CONFIGURATION : ISO & AFNOR (CONNECTOR SIDE)

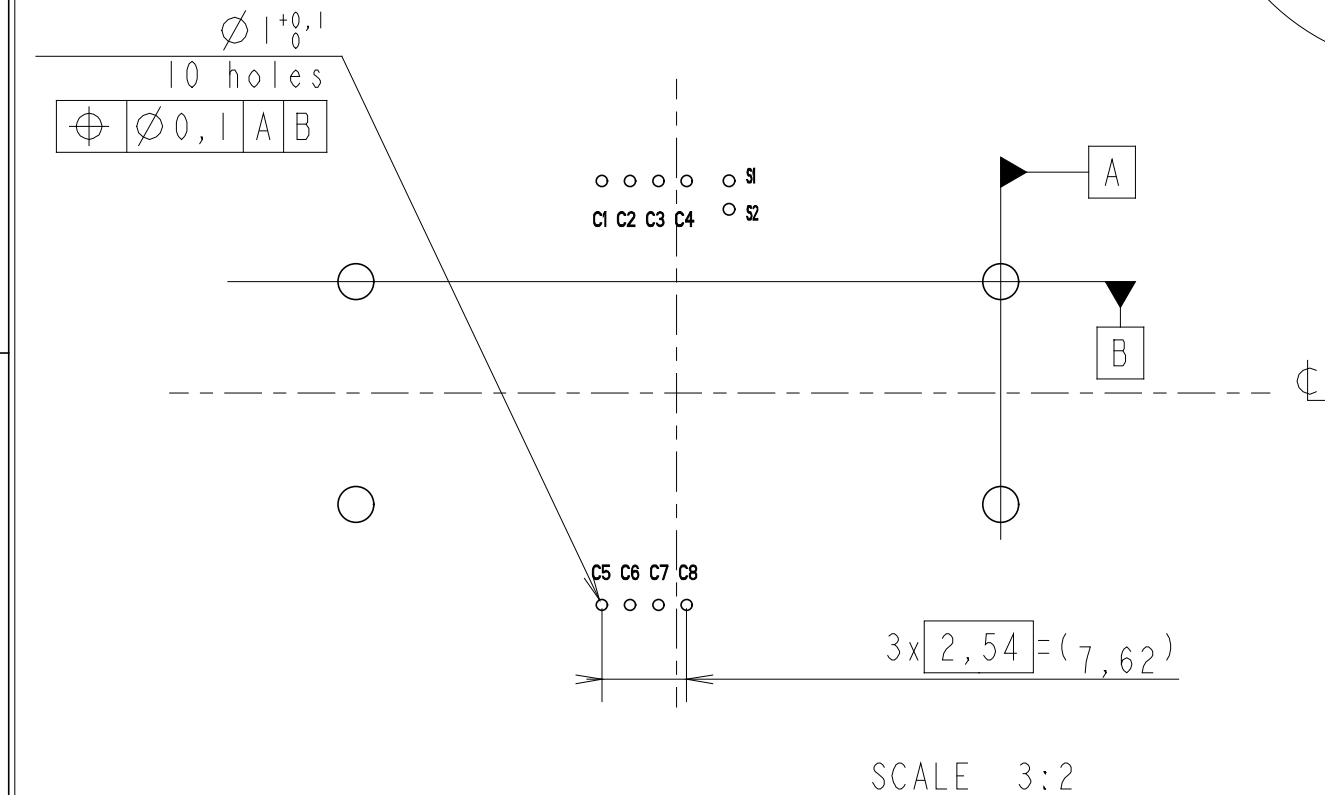


STANDARD LAYOUT FOR 'KEEP OUT ZONE' (Connector Side)



FCI

RECOMMENDED PCB LAYOUT CONTACT CONFIGURATION : ISO (CONNECTOR SIDE)



All rights strictly reserved. Reproduction or issue to third parties in any form whatever is not permitted without written authority from the proprietor. Property of FCI. Copyright FCI.

CARD INSERTION

EUROPEAN PROJECTION

| | | | | | |
|-------------------------------|-------------|--|----------------------------|------------|--------------|
| FCI www.fciconnect.com | | surface - <input checked="" type="checkbox"/> ISO 1302 | tolerance ISO 406 ISO 1101 | projection | mm |
| Dr | DILIPTHOMAS | 02.04.30 | Product family | 5S2F | size A3 |
| Eng | F TISSERAND | 02.04.30 | Spec ref | SEE NOTES | Scale 3:2 |
| Chr | N.TWINCY | '05/05/10 | Material | SEE NOTES | ECN 105-0071 |
| Appr | KS | '05/05/10 | | | |
| title L26 TYPE F13 | | | dwg no VJW_54825 | | Rev. C |
| catalog no See Table | | | CUSTOMER COPY | | sheet 2 of 2 |