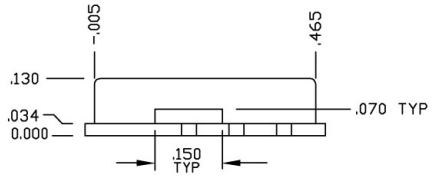


SEE DETAIL 'A'

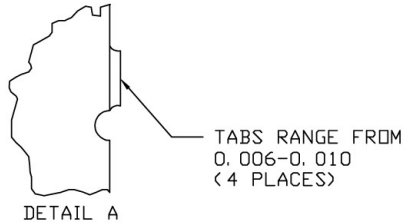
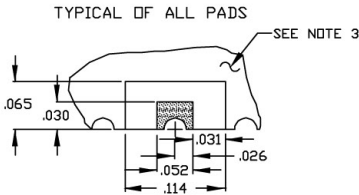


NOTES:

1. THE INSIDE RADIUS OF ALL 14 HALF HOLES AT THE PERIMETER OF THE BOARD ARE SOLDER PLATED TO PROVIDE A SURFACE FOR THE ATTACHMENT OF THE VCO TO A MOTHERBOARD, IN 11 LOCATIONS, WITH 3 PADS BEING USED FOR ELECTROMECHANICAL INTERFACE, 14 SOLDER LOCATIONS REQUIRED.
2. THE SURFACE OF THE SHIELD IS TIN PLATED AND MAY BE SOLDERED TO. THE SHIELDS BASE METAL IS BRASS.
3. THE GROUND PLANE IS GROUND AND ATTACHES TO A GROUND TRACK ON THE UPPER SIDE OF THE BOARD AS WELL AS THE SHIELD BY PTH.
4. UNLESS OTHERWISE NOTED ALL DIMENSIONS ARE IN INCHES.
5. UNLESS OTHERWISE NOTED ALL TOLERANCES ARE AS FOLLOWS:


TOLERANCES
.XXX = ± .010

P1=VT
P2=RF OUT
P3=Vcc



9-26-96	B	ECO 96-0197
---------	---	-------------

RELEASED BY:	
NEXT ASSEMBLY:	
SURFACE COATING:	
MATERIAL:	

 Z-Communications, Inc. 9939 VIA PASAR SAN DIEGO, CALIFORNIA 92126		PART NAME:		
		MINI-14S-L		
DISK/DRIVE LTR./ FILE NAME:		DRAWN:	DATE:	SCALE:
H:\ENG\DBASEENG\OUTLINE\415-0063.DWG		D. ROQUE	9-26-96	NONE
FILE LOCATION		DRAWING NO.:		REV.:
—		415-0063		B
SHEET NO.:				
1 OF 1				