

# LED LAMP ARRAYS

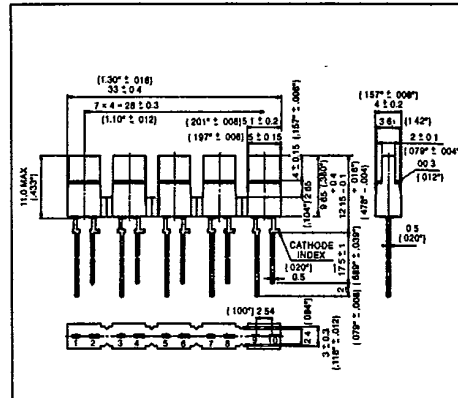
T-41-31

## MT208-5R, MT208-5G, MT208-5Y

### FEATURES

- All plastic mold type  
 MT208-5R — Red Light Emission  
 MT208-5G — Green Light Emission  
 MT208-5Y — Yellow Light Emission
- Bar point size 2x5mm.
- Each bar point is diffused producing uniform light.

OUTLINE AND PIN CONNECTION



PIN NO.	CONNECTION	PIN NO.	CONNECTION
1	ANODE	6	CATHODE
2	CATHODE	7	ANODE
3	ANODE	8	CATHODE
4	CATHODE	9	ANODE
5	ANODE	10	CATHODE



Weight: 1.61 g

### MAXIMUM RATINGS (Ta = 25°C)

CHARACTERISTIC	SYMBOL	RATING	UNIT
DC Forward Current/Segment	MT208-5R	20	mA
	MT208-5G	25	
	MT208-5Y	25	
Reverse Voltage	V <sub>R</sub>	4	V
Power Dissipation (Diode)	MT208-5R	56	mW
	MT208-5G	70	
	MT208-5Y	70	
Operating Temperature	T <sub>opr</sub>	-20 ~ 75	°C
Storage Temperature	T <sub>stg</sub>	-30 ~ 100	°C

### OPTO-ELECTRICAL CHARACTERISTICS (Ta = 25°C)

CHARACTERISTIC	SYMBOL	TEST CONDITION	MIN	TYP.	MAX.	UNIT
Forward Voltage	MT208-5R	I <sub>F</sub> = 20mA	—	2.1	2.8	V
	MT208-5G		—	2.2	2.8	
	MT208-5Y		—	2.2	2.8	
Reverse Current	I <sub>R</sub>	V <sub>R</sub> = 4V	—	—	100	μA
Luminous Intensity/Segment	MT208-5R	I <sub>F</sub> = 15mA	0.3	0.6	—	mcd
	MT208-5G		0.5	1.2	—	
	MT208-5Y		0.5	0.9	—	
Peak Emission Wave Length	MT208-5R	I <sub>F</sub> = 15mA	—	700	—	nm
	MT208-5G		—	565	—	
	MT208-5Y		—	585	—	
Spectral Line Half Width	MT208-5R	I <sub>F</sub> = 15mA	—	100	—	nm
	MT208-5G		—	25	—	
	MT208-5Y		—	32	—	