

INTEGRATED CONNECTOR MODULES

0810-1X4T-36 10/100Base-TX Extended Temp MagJack® 1 x 4 with LEDs

- Extended operating temperature -40° to +85° C

ELECTRICAL CHARACTERISTICS @ 25°C

URNS RATIO

TX	1CT : 1
RX	1CT : 1

QCL @ 100kHz/100mVRMS
8mA DC BIAS

350μH MIN.

INS. LOSS

1MHz TO 100MHz -1.0 dB MAX

RET. LOSS (MIN)

1MHz-30MHz -18 dB
30MHz-60MHz -18+20LOG(F/30MHz) dB
60MHz-80MHz -12 dB

CROSS TALK (TX - RX)
500kHz-100MHz

-35 dB MIN

CM TO CM REJ
100kHz-100MHz

-30 dB MIN

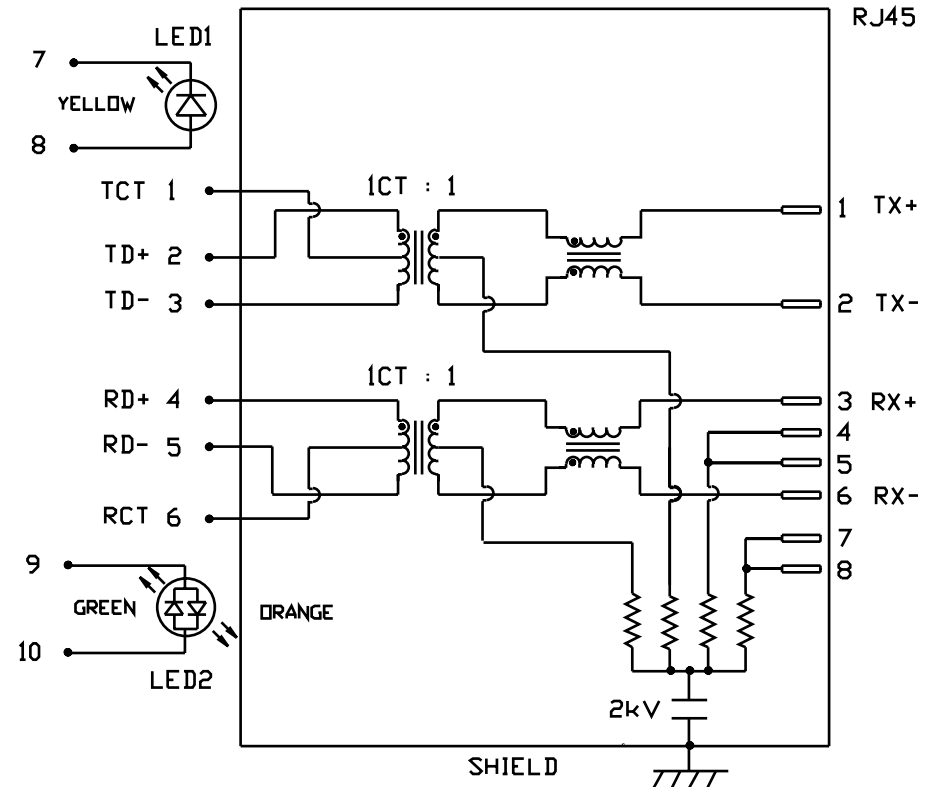
CM TO DM REJ
100kHz-100MHz

-40 dB MIN

HIPOT (Isolation Voltage):

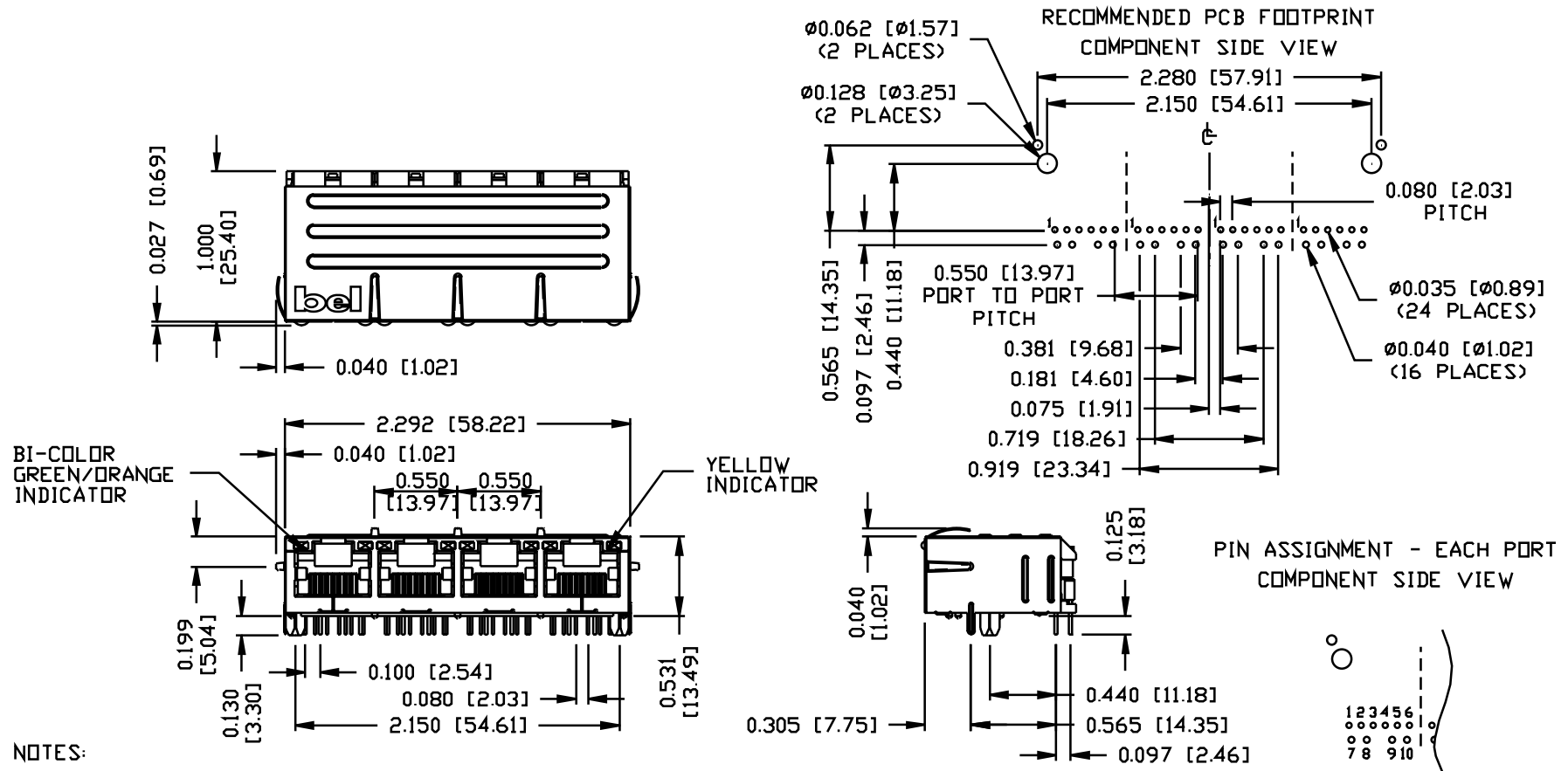
1500 Vrms

SCHEMATIC



INTEGRATED CONNECTOR MODULES

0810-1X4T-36 10/100Base-TX Extended Temp MagJack® 1 x 4 with LEDs



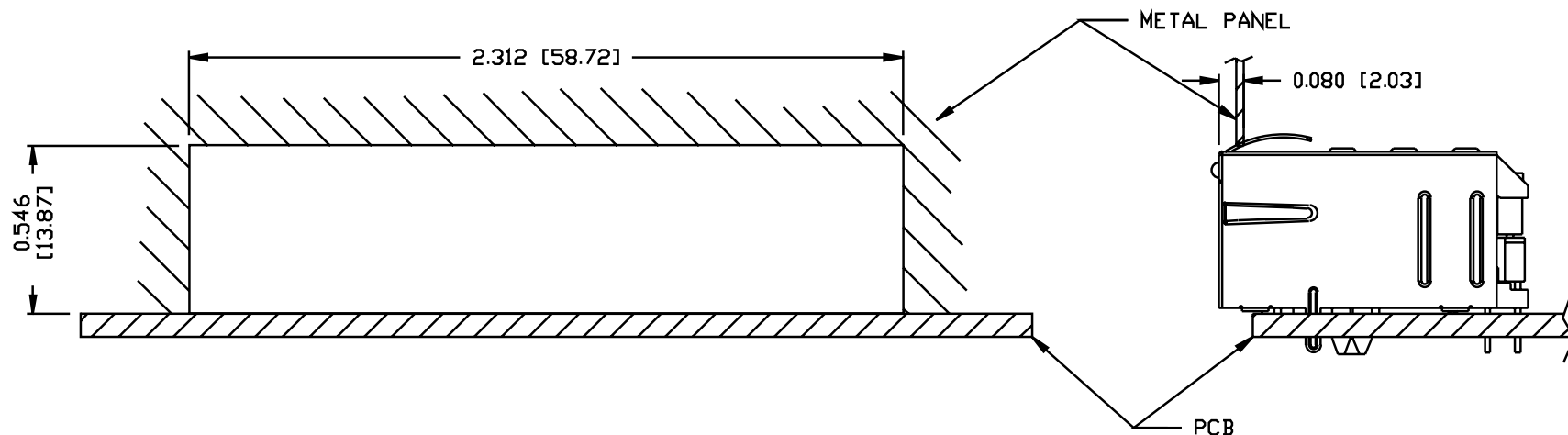
NOTES:

- PLASTIC HOUSING: THERMOPLASTIC PBT
FLAMMABILITY RATING UL 94V-0
- CONTACTS PLATING: 50 MICRO-INCH HARD GOLD PLATING
- PINS: TIN-COATED COPPER WIRE, DIA 0.018 INCH.
- SOLDERABILITY: PER MIL STD. 202, METHOD 208.
- METAL SHIELD: TIN/LEAD PLATED COPPER ALLOY.

INTEGRATED CONNECTOR MODULES

0810-1X4T-36 10/100Base-TX Extended Temp MagJack® 1 x 4 with LEDs

SUGGESTED PANEL OPENING



NOTES:

THE DISTANCE OF PANEL INSIDE SURFACE RELATIVE TO FRONT SURFACE OF PART IS ONLY A SUGGESTION.
IN CASE THIS DISTANCE IS DIFFERENT, THE REQUIRED PANEL OPENING DIMENSIONS CHANGE ACCORDINGLY.

PACKING INFORMATION

PACKING TRAY : 0200-0148-17

PACKING QUANTITY : 30 PCS FINISHED GOOD PER TRAY.

10 TRAYS (300 PCS FINISHED GOOD) PER CARTON BOX.

NOTE : CARDBOARDS ARE PLACED BETWEEN LAYERS OF PACKING TRAY INSIDE CARTON BOX.
(INCLUDE THE UPPERMOST AND LOWERMOST TRAY)