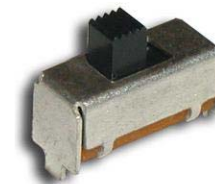


SPECIFICATIONS

| | |
|-----------------------|-----------------------|
| Switch Function | SPDT |
| Electrical Ratings | 300mA @ 50VDC |
| Electrical Life | 10,000 cycles typical |
| Contact Resistance | < 50 mΩ initial |
| Actuation Force | 200 +/- 100gF |
| Actuator Travel | 3.0 mm total |
| Dielectric Strength | 1000Vrms min |
| Insulation Resistance | > 100MΩ min |
| Operating Temperature | -40°C to 85°C |
| Storage Temperature | -40°C to 85°C |



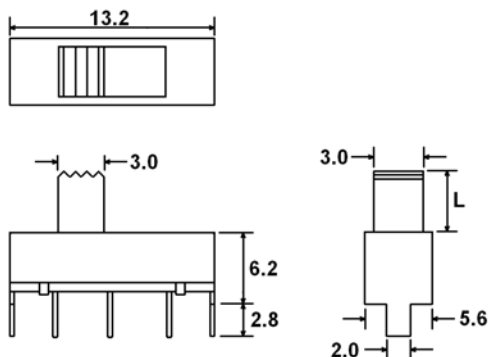
MATERIALS ←RoHS COMPLIANT

| | |
|-----------|--------------------------------|
| Actuator | Acetal |
| Housing | Steel |
| Base | Phenolic |
| Contacts | Phosphor Bronze, Silver Plated |
| Terminals | Brass, Silver Plated |

ORDERING INFORMATION

| | | |
|---------------------|---------------|-----------|
| 1. Series: | MS1202 | L6 |
| MS1202 | | |
| 2. Actuator Length: | | |
| L4 = 4mm | | |
| L6 = 6mm | | |

DIMENSIONS



SCHEMATIC & PC LAYOUT

