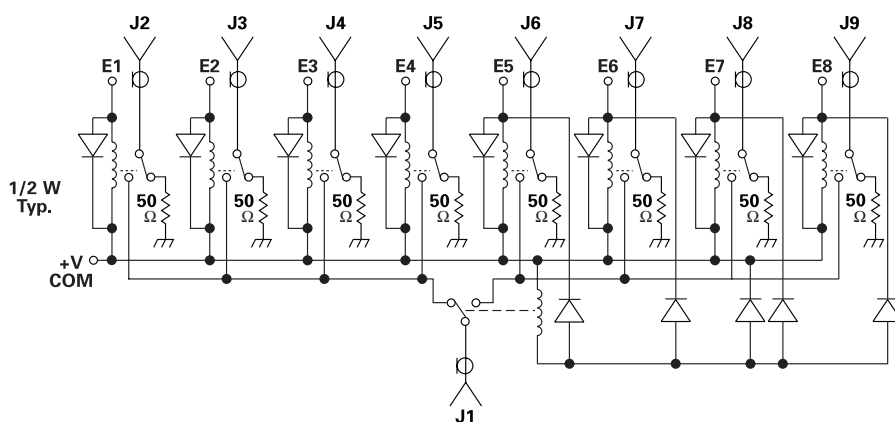
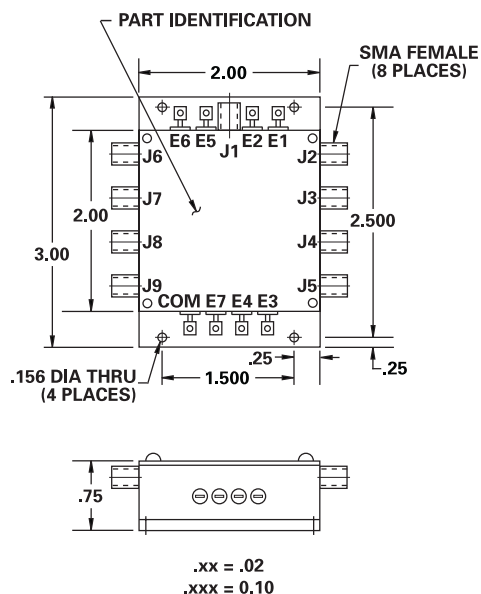


## SP8T Relay

## FEATURES

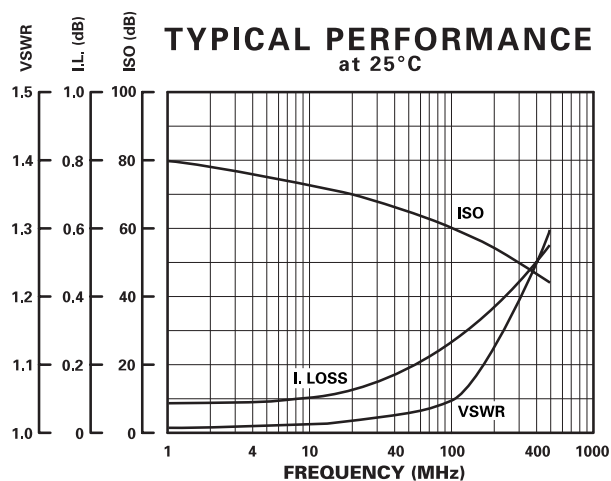
- DC-200 MHz
- 50 $\Omega$  Terminations
- 25 Watt CW
- SMA Connectors

**SP8T**



## GUARANTEED PERFORMANCE

Parameter	Min	Typ	Max	Units	Conditions
Operating Frequency	DC		200	MHz	
DC Voltage					See Table
Insertion Loss		0.4	0.5	dB	
Isolation	50	55		dB	
VSWR <i>Thru</i>		1.2/1	1.25/1		
Impedance		50		OHMS	
Switching Speed			5	mSec	
RF Power <i>Operate</i>			25	W	CW (Thru)
Operating Temperature	-55	+25	+85	°C	TA



<b>Voltage</b>	<b>Part No.</b>
<b>6</b>	<b>100C1159 - 6</b>
<b>12</b>	<b>100C1159 - 12</b>
<b>18</b>	<b>100C1159 - 18</b>
<b>26</b>	<b>100C1159 - 26</b>

**PART NO. EXAMPLE - SEE TABLE**  
**100C1159 - 26**  
 Basic ——— -26 for +26V  
 Part Number      Operation