

### General Description

The Topway ELM2007 is a high-voltage driver designed for driving EL lamp of up to 100cm<sup>2</sup>. The input supply voltage range from 4.5V to 12V. The device works under switch mode using a single inductor and maximum  $\pm 85V$  output can be applied to the EL lamp.

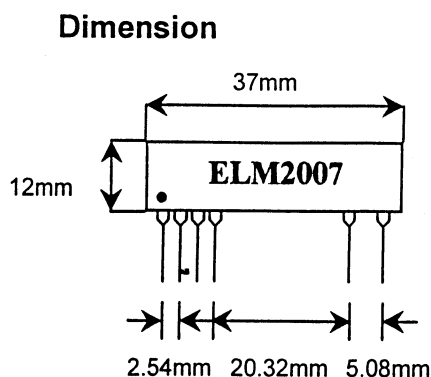
### Features

- Processed with SMT impact
- Less than 7mm in thickness
- Wide range operation voltage 4.5~12V
- Wide output load range from 0 to 100cm<sup>2</sup>
- Firm specification
- On/off switch

### Environment

- |                               |                 |
|-------------------------------|-----------------|
| • Operating temperature range | 0~50°C          |
| • Operating humidity range    | less than 90%RH |
| • Stored temperature range    | -25~75°C        |
| • Stored humidity range       | less than 95%RH |

### Package Configuration



### Pin Description

- |   |              |
|---|--------------|
| 1 | Vin          |
| 2 | GND          |
| 3 | On/off       |
| 4 | Inter signal |
| 5 | VA           |
| 6 | VB           |

---

TOPWAY Electronic Co., Ltd.

416Rm. Kangle Bld. Huaqiang North Road, Shenzhen Guangdong China

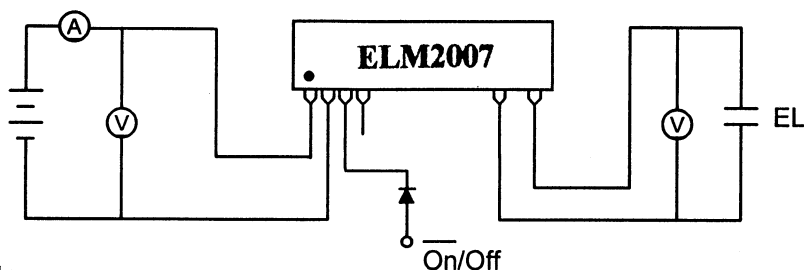
518031

Telephone: 86-755-3354422, 3264347 Fax: 86-755-3354422

E-mail: topway@szonline.net

---

## Application



**\*Note:**

•Vin applied to On/Off the output will be shut down.

## Electrical Characteristics

Symbol	Parameter	Min.	Typ	Max.	Units
Iin	Vdd supply current	26		150	mA
VA-B	Output Voltage across lamp	80	85	90	Vp-p
FEL	VA-B output drive frequency	400	500	600	Hz

## Recommended Operating Condition

Symbol	Parameter	Min.	Typ	Max.	Units
Vdd	Supply voltage	4.5		12	V
CL	Load capacitance	0		100	CM <sup>2</sup>
TA	Operating temperature	0		50	°C

TOPWAY Electronic Co., Ltd.

416Rm. Kangle Bld. Huaqiang North Road, Shenzhen Guangdong China

518031

Telephone: 86-755-3354422, 3264347 Fax: 86-755-3354422

E-mail: topway@szonline.net