

## General Description

The LM2574 family is a series of easy to use fixed and adjustable switching voltage regulators. The LM2574 contains all of the active circuitry necessary to construct a stepdown (buck) switching regulator and requires a minimum of external components.

The LM2574 is available in 3.3V, 5V, and 12V fixed output versions, or an adjustable version with an output voltage range of 1.23V to 37V. Output voltage is guaranteed to  $\pm 4\%$  for specified input and load conditions.

The LM2574 can supply 0.5A while maintaining excellent line and load regulation. The output switch includes cycle-by-cycle current limiting, as well as thermal shutdown for full protection under fault conditions.

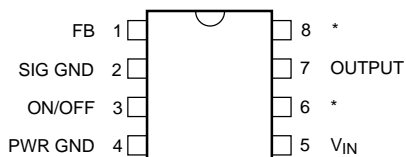
An external shutdown connection selects operating or standby modes. Standby current is less than 200 $\mu$ A.

Heat sinks are generally unnecessary due the regulator's high efficiency. Adequate heat transfer is usually provided by soldering all package pins to a printed circuit board.

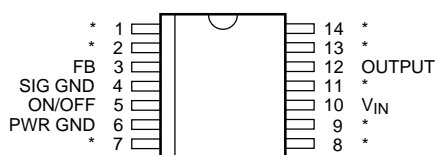
The LM2574 includes internal frequency compensation and an internal 52kHz fixed frequency oscillator guaranteed to  $\pm 10\%$  of the frequency.

Circuits constructed around the LM2574 use a standard series of inductors which are available from several different manufacturers.

## Pin Configuration



8-pin DIP (N)



14-pin SOIC (WM)

\* NC: solder to printed circuit for maximum heat transfer

## Features

- 3.3V, 5V, 12V, and Adjustable Output Versions
- Adjustable Version Output 1.23V to 37V  $\pm 4\%$  Max. over Line and Load Conditions.
- Guaranteed 0.5A Output Current
- Wide Input Voltage, up to 40V
- Thermal Shutdown and Current Limit Protection
- Requires only 4 external Components.
- Shutdown Capability (Standby Mode)
- Low Power Standby Mode < 200 $\mu$ A Typical
- High Efficiency
- 52kHz Fixed Frequency Internal Oscillator
- Uses Standard Inductors

## Applications

- Simple High-efficiency Step-down (Buck) Regulator
- Efficient Pre-Regulator for Linear Regulators
- On-card Switching Regulators
- Positive to Negative Converter (Buck-Boost)

## Ordering Information

Part Number	Temp. Range	Package
LM2574BN	-40°C to +85°C	8-pin Plastic DIP
LM2574BWM	-40°C to +85°C	14-pin Wide SOIC
LM2574-3.3BN	-40°C to +85°C	8-pin Plastic DIP
LM2574-3.3BWM	-40°C to +85°C	14-pin Wide SOIC
LM2574-5.0BN	-40°C to +85°C	8-pin Plastic DIP
LM2574-5.0BWM	-40°C to +85°C	14-pin Wide SOIC
LM2574-12BN	-40°C to +85°C	8-pin Plastic DIP
LM2574-12BWM	-40°C to +85°C	14-pin Wide SOIC

## Typical Application

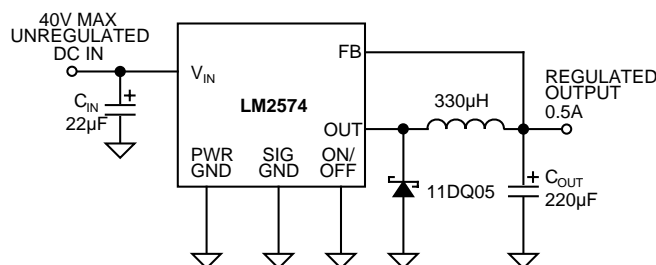


Figure 1. Fixed Output Regulator Circuit

## Absolute Maximum Ratings

Maximum Supply Voltage

LM2574 ..... 45V

OFF Pin Input Voltage .....  $-0.3V \leq V \leq V_{IN}$

Output Voltage to Ground (Steady State) ..... -1V

Power Dissipation ..... Internally Limited

Storage Temperature Range .....  $-65^{\circ}\text{C}$  to  $+150^{\circ}\text{C}$

Minimum ESD Rating

C = 100pF, R = 1.5k $\Omega$  ..... 2kV

FB Pin ..... 1kV

Lead Temperature (soldering, 10 sec.) .....  $260^{\circ}\text{C}$

Maximum Junction Temperature .....  $150^{\circ}\text{C}$

## Operating Ratings

Temperature Range

LM2574 .....  $40^{\circ}\text{C} \leq T_J \leq +125^{\circ}\text{C}$

Supply Voltage

LM2574 ..... 40V

**Electrical Characteristics** Specifications with standard typeface are for  $T_J = 25^{\circ}\text{C}$ , and those with boldface type apply over full Operating Temperature Range. Unless otherwise specified,  $V_{in} = 12\text{V}$ , and  $I_{LOAD} = 100\text{mA}$ .

Symbol	Parameter	Condition	Min	Typ	Max	Units
--------	-----------	-----------	-----	-----	-----	-------

### SYSTEM PARAMETERS, ADJUSTABLE REGULATORS (Note 3) Test Circuit Figure 2

$V_{OUT}$	Feedback Voltage	$V_{IN} = 12\text{V}$ , $I_{LOAD} = 0.1\text{A}$ , $V_{OUT} = 5\text{V}$	1.217	1.230	1.243	V
$V_{OUT}$	Feedback Voltage (LM2574)	$0.1\text{A} \leq I_{LOAD} \leq 0.5\text{A}$ , $7\text{V} \leq V_{IN} \leq 40\text{V}$ , $V_{OUT} = 5\text{V}$	1.193 <b>1.180</b>	1.230	1.267 <b>1.280</b>	V V
$\eta$	Efficiency	$V_{IN} = 12\text{V}$ , $I_{LOAD} = 0.1\text{A}$ , $V_{OUT} = 5\text{V}$		78		%

### SYSTEM PARAMETERS, 3.3V REGULATORS (Note 3) Test Circuit Figure 3

$V_{OUT}$	Output Voltage	$V_{IN} = 12\text{V}$ , $I_{LOAD} = 0.1\text{A}$ , $V_{OUT} = 3.3\text{V}$	3.234	3.3	3.366	V
$V_{OUT}$	Output Voltage (LM2574-3.3)	$0.1\text{A} \leq I_{LOAD} \leq 0.5\text{A}$ , $4.75\text{V} \leq V_{IN} \leq 40\text{V}$ , $V_{OUT} = 3.3\text{V}$	3.168 <b>3.135</b>	3.3	3.432 <b>3.465</b>	V V
$\eta$	Efficiency	$V_{IN} = 12\text{V}$ , $I_{LOAD} = 0.1\text{A}$		73		%

### SYSTEM PARAMETERS, 5V REGULATORS (Note 3) Test Circuit Figure 3

$V_{OUT}$	Output Voltage	$V_{IN} = 12\text{V}$ , $I_{LOAD} = 0.1\text{A}$ , $V_{OUT} = 5\text{V}$	4.900	5.0	5.100	V
$V_{OUT}$	Output Voltage (LM2574-5.0)	$0.1\text{A} \leq I_{LOAD} \leq 0.5\text{A}$ , $7\text{V} \leq V_{IN} \leq 40\text{V}$ , $V_{OUT} = 5\text{V}$	4.800 <b>4.750</b>	5.0	5.200 <b>5.250</b>	V V
$\eta$	Efficiency	$V_{IN} = 12\text{V}$ , $I_{LOAD} = 0.1\text{A}$ , $V_{OUT} = 5\text{V}$		78		%

### SYSTEM PARAMETERS, 12V REGULATORS (Note 3) Test Circuit Figure 3

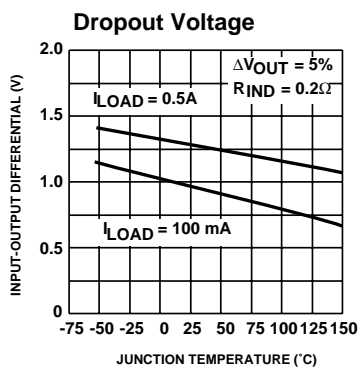
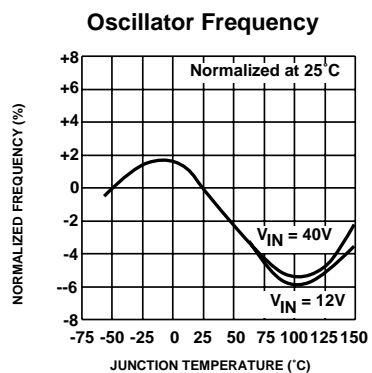
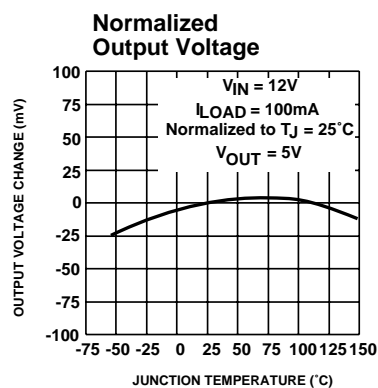
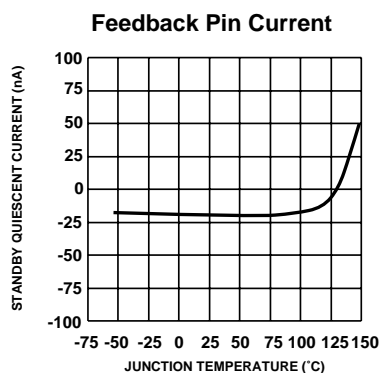
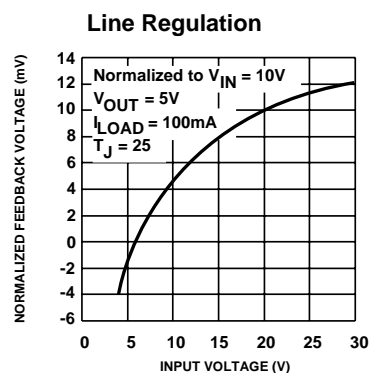
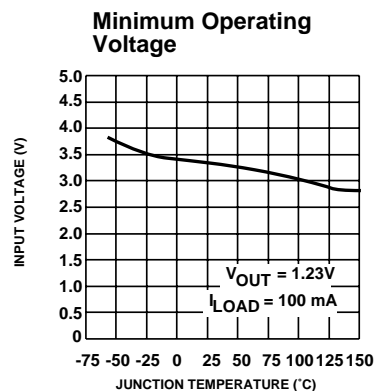
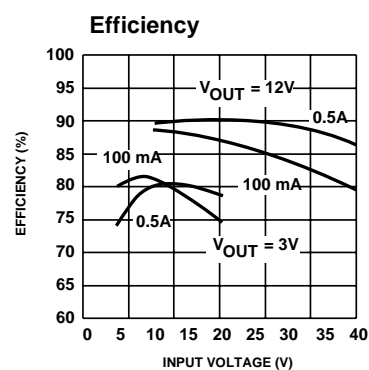
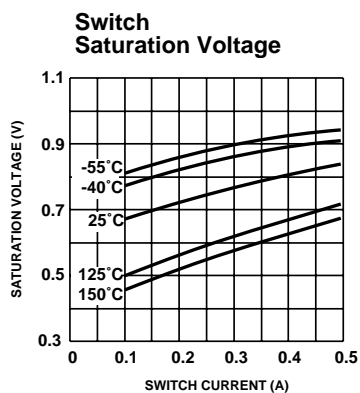
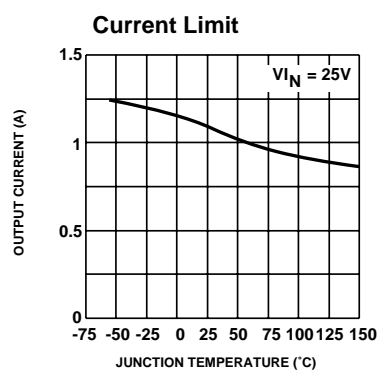
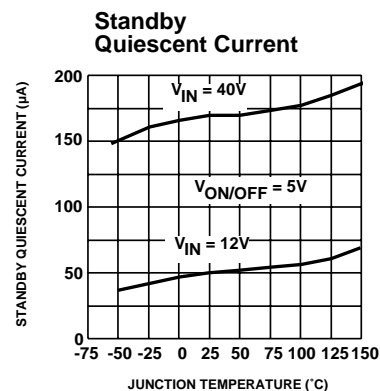
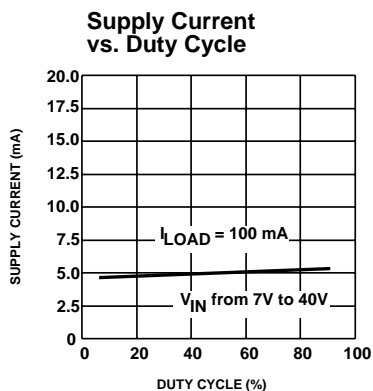
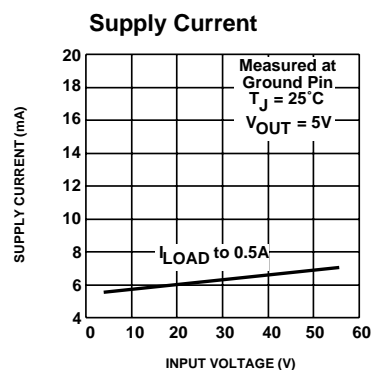
$V_{OUT}$	Output Voltage	$V_{IN} = 25\text{V}$ , $I_{LOAD} = 0.1\text{A}$ , $V_{OUT} = 12\text{V}$	11.760	12	12.240	V
$V_{OUT}$	Output Voltage (LM2574-12)	$0.1\text{A} \leq I_{LOAD} \leq 0.5\text{A}$ , $15\text{V} \leq V_{IN} \leq 40\text{V}$ , $V_{OUT} = 12\text{V}$	11.520 <b>11.400</b>	12	12.480 <b>12.600</b>	V V
$\eta$	Efficiency	$V_{IN} = 25\text{V}$ , $I_{LOAD} = 0.1\text{A}$		88		%

## Electrical Characteristics (continued)

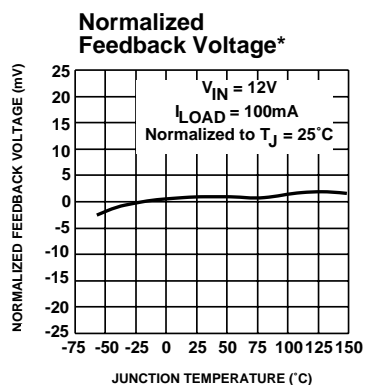
Symbol	Parameter	Condition	Min	Typ	Max	Units
<b>DEVICE PARAMETERS, ADJUSTABLE REGULATOR</b>						
$I_B$	Feedback Bias Current	$V_{OUT} = 5V$		50	100 <b>500</b>	nA nA
<b>DEVICE PARAMETERS, FIXED and ADJUSTABLE REGULATORS</b>						
$f_o$	Oscillator Frequency	<b>Note 8</b>	47 <b>42</b>	52	58 <b>63</b>	kHz kHz
$V_{SAT}$	Saturation Voltage	$I_{OUT} = 0.5A$ , <b>Note 4</b>		0.8	1.2 <b>1.4</b>	V V
DC	Max Duty Cycle (ON)	<b>Note 5</b>	93	98		%
$I_{CL}$	Current Limit	Peak Current, $t_{ON} \leq 3\mu s$ , <b>Note 4</b>	0.7 <b>0.65</b>	1.0	1.6 <b>1.8</b>	A
$I_L$	Output Leakage Current	$V_{IN}$ , <b>Note 6</b> , Output = 0V <b>Note 6</b> , Output = -1V		7.5	2 30	mA
$I_Q$	Quiescent Current	<b>Note 6</b>		5	10	mA
$I_{STBY}$	Standby Quiescent Current	ON/OFF Pin = 5V (OFF)		50	200	$\mu A$
$\theta_{JA}$	Thermal Resistance	N Package, Junction to Ambient, <b>Note 7</b> WM Package, Junction to Ambient, <b>Note 7</b>		85 100		$^{\circ}C/W$ $^{\circ}C/W$
<b>ON/OFF CONTROL, FIXED and ADJUSTABLE REGULATORS Test Circuit Figures 2, 3</b>						
$V_{IH}$	ON/OFF Input Level	$V_{OUT} = 0V$	2.2 <b>2.4</b>	1.4		V V
$V_{IL}$	ON/OFF Input Level	$V_{OUT} = 5V$		1.2	1.0 <b>0.8</b>	V V
$I_{IH}$	ON/OFF Logic Current	ON/OFF = 5V (OFF)		4	30	$\mu A$
$I_{IL}$	ON/OFF Logic Current	ON/OFF = 0V (ON)		0.01	10	$\mu A$

- Note 1** Absolute Maximum Ratings indicate limits beyond which damage to the device may occur. Operating Ratings indicate for which the device is intended to be functional, but do not guarantee specific performance limits. For guaranteed specifications and test conditions, see the Electrical Characteristics.
- Note 2** All limits guaranteed at room temperature (standard type face) and at **temperature extremes (bold type face)**. All room temperature limits are 100% production tested. All limits at **temperature extremes** are guaranteed via testing.
- Note 3** External components such as the catch diode, inductor, input and output capacitors can affect switching regulator system performance. When the LM2574 is used as shown in *Figure 1* test circuit, system performance will be shown in system parameters section of Electrical Characteristics.
- Note 4** Output (pin 2) sourcing current. No diode, inductor, or capacitor connected to input.
- Note 5** Feedback (pin 4) removed from output and connected to 0V.
- Note 6** Feedback (pin 4) removed from output and connected to 12V to force the output transistor OFF.
- Note 7** Junction to ambient thermal resistance with approximately 1 square inches of PC board copper surrounding the leads.

# Typical Performance Characteristics (Circuit of Figure 1)



## Typical Performance Characteristics (continued)



\* Adjustable version only

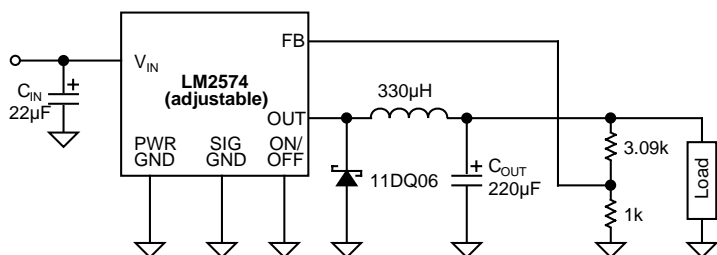
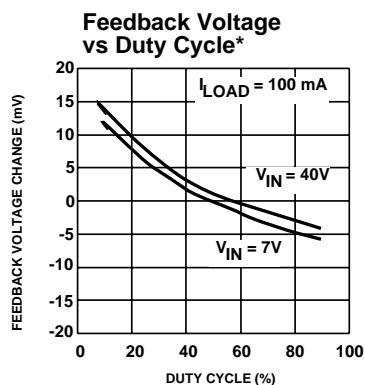


Figure 2. Adjustable Regulator Test Circuit

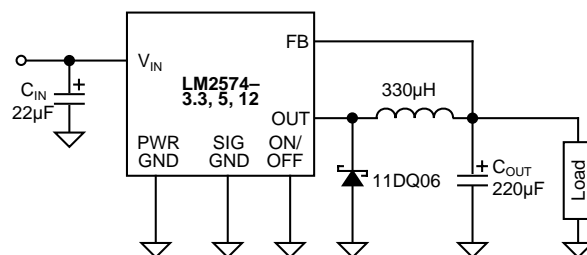
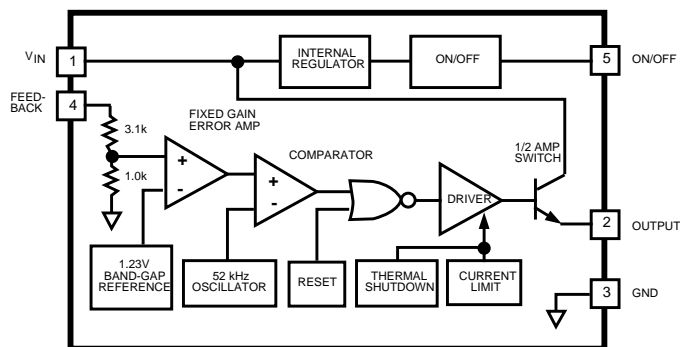


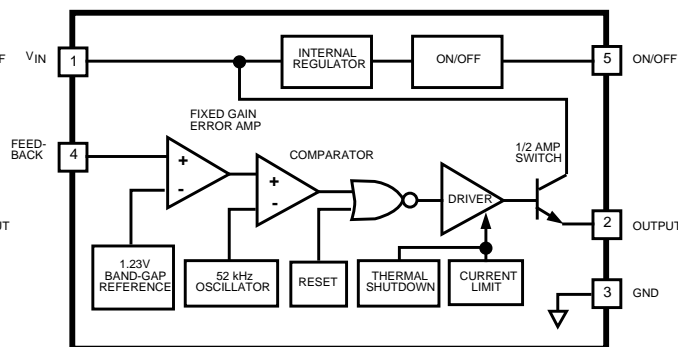
Figure 3. Fixed Regulator Test Circuit

## Block Diagrams



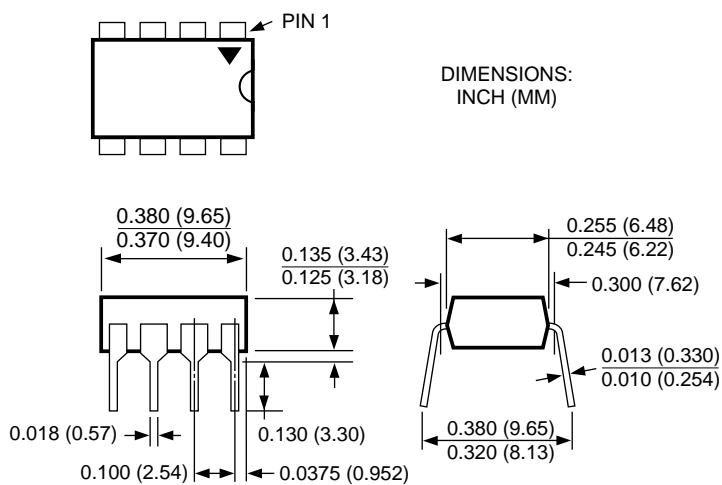
Note: Pin numbers are for the TO-220 package

Fixed Regulator

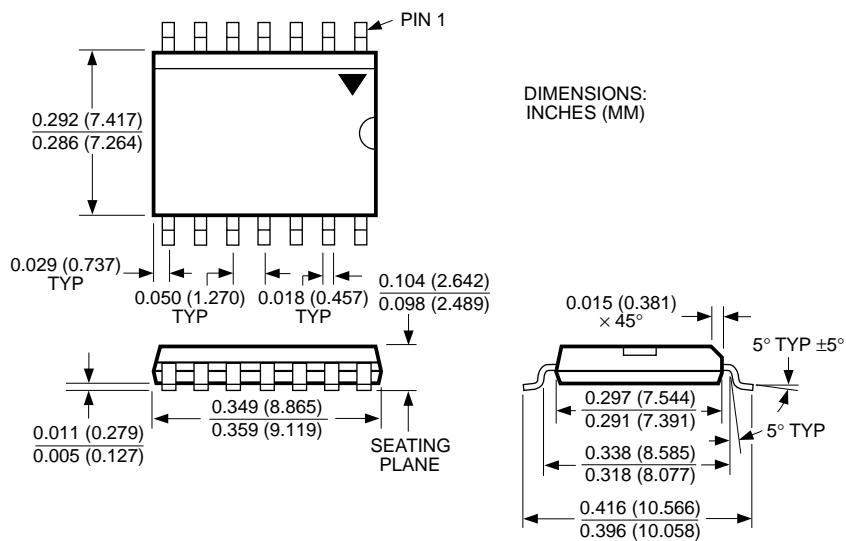


Adjustable Regulator

## Package Information



**8-Pin DIP (N)**



**14-Pin Wide SOP (WM)**



---

**MICREL INC. 1849 FORTUNE DRIVE SAN JOSE, CA 95131 USA**

TEL + 1 (408) 944-0800 FAX + 1 (408) 944-0970 WEB <http://www.micrel.com>

This information is believed to be accurate and reliable, however no responsibility is assumed by Micrel for its use nor for any infringement of patents or other rights of third parties resulting from its use. No license is granted by implication or otherwise under any patent or patent right of Micrel Inc.

© 1999 Micrel Incorporated