



## CMOS HS-A1420 Series

### Description

The **HS-A1420 Series** of quartz crystal oscillators provide enable/disable 3-state CMOS compatible signals for bus connected systems. Supplying Pin 1 of the HS-A1420 units with a logic "1" or open enables its output. In the disabled mode, output pin presents a high impedance to the load. All units are resistance welded in an all metal package, offering RFI shielding, and are designed to survive standard wave soldering operations without damage. Insulated standoffs to enhance board cleaning are standard.

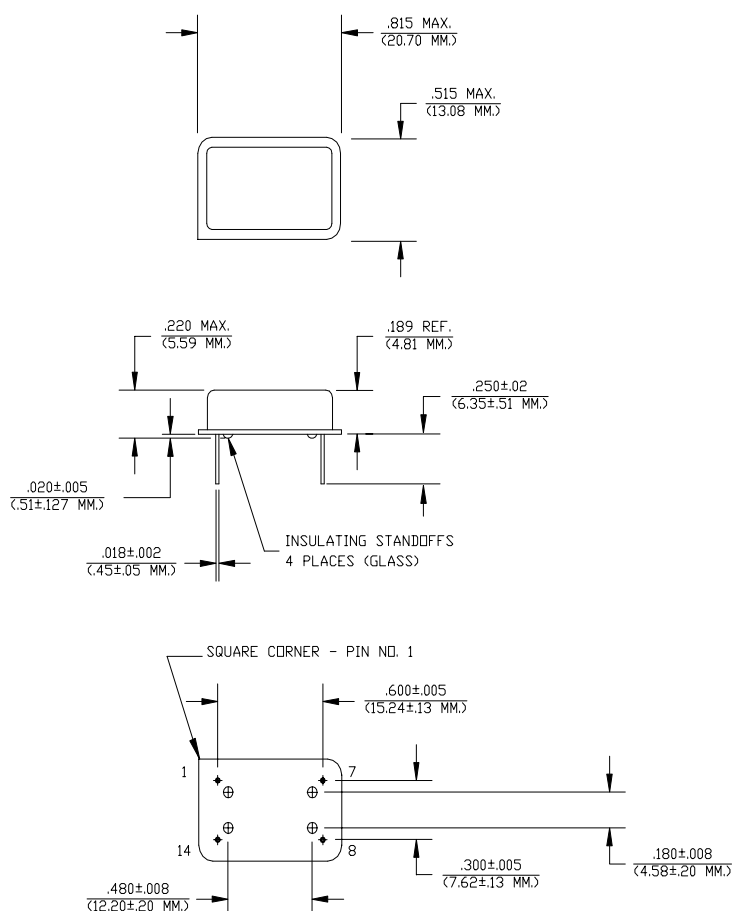
### Features

- Wide frequency range— 40.1MHz to 70.0MHz
- User specified tolerance available
- Will withstand vapor phase temperatures of 253°C for 4 minutes maximum
- Space-saving alternative to discrete component oscillators
- High shock resistance, to 3000g
- All metal, resistance weld, hermetically sealed package
- 3.3 Volt operation
- Low Jitter
- High Q Crystal actively tuned oscillator circuit
- Power supply decoupling internal
- No internal PLL avoids cascading PLL problems
- Low power consumption
- Gold plated leads - Solder dipped leads available upon request

### Electrical Connection

Pin Connection

1	Enable Input
7	Grd & Case
8	Output
14	V <sub>DD</sub>



Dimensions are in inches and (MM)



**FREQUENCY  
CONTROLS, INC.**

357 Beloit Street, P.O. Box 457, Burlington, WI 53105-0457 U.S.A. Phone 262/763-3591 FAX 262/763-2881

Email: [nelsales@nelfc.com](mailto:nelsales@nelfc.com) [www.nelfc.com](http://www.nelfc.com)

HS-A1420 Series Continued  
CMOS

Rev. M

## Operating Conditions and Output Characteristics

### Electrical Characteristics

Parameter	Symbol	Conditions	Min	Typical	Max
Frequency	----	----	40.1MHz	----	70.0MHz
Duty Cycle	----	----	45/55%	----	55/45%
Logic 0	$V_{OL}$	@ $V_{DD}/2$ @ 600 $\mu$ A	----	----	0.2V
Logic 1	$V_{OH}$	@ 600 $\mu$ A	$V_{DD}-0.2V$	----	----
Rise & Fall Time	$t_{r,t_f}$	10-90%	----	----	8 ns
TPZ	----	----	----	----	25 ns
Enable/Disable					
Logic High Voltage	----	----	2.0V	----	----
Enable/Disable					
Logic Low Voltage	----	----	----	----	0.8V
Jitter, RMS <sup>(2)</sup>	----	----	----	----	5 psec
Frequency Stability <sup>(1)</sup>	dF/F	Overall conditions including: voltage, calibration, temp., 10 yr aging, shock, vibration	-100ppm	----	+100ppm

### General Characteristics

Parameter	Symbol	Conditions	Min	Typical	Max
Supply Voltage	$V_{DD}$	----	3.135V	3.3V	3.465V
Supply Current	$I_{DD}$	No Load	0.0 mA	----	40mA
Output current	$I_O$	----	0.0 mA	----	$\pm 16.0$ mA
Operating temperature	$T_A$	----	0°C	----	70°C
Storage temperature	$T_S$	----	-55°C	----	125°C
Power Dissipation	$P_D$	----	----	----	138 mW
Lead temperature	$T_L$	Soldering, 10 sec.	----	----	300°C
Load	----	----	----	----	15pf
Start-up time	$t_S$	----	----	2 ms	10 ms

### Environmental and Mechanical Characteristics

Mechanical Shock	Per MIL-STD-202, Method 213, Condition E
Thermal Shock	Per MIL-STD-883, Method 1011, Condition A
Vibration	0.060" double amplitude 10 Hz to 55 Hz, 35g's 55Hz to 2000 Hz
Soldering Condition	300°C for 10 seconds
Hermetic Seal	Leak rate less than $1 \times 10^{-8}$ atm.cc/sec of helium

#### Footnotes:

- 1) Standard frequency stability ( $\pm 20, \pm 25, \pm 50$ ppm & others available)
- 2) Jitter performance is frequency dependent. Please contact factory for full characterization.

#### Creating a Part Number

HS - A142X - FREQ

#### Package Code

HS Ledged 4 pin (14 pin)  
SM Ledged 4 pin (14 pin) SMD  
Gull Wing

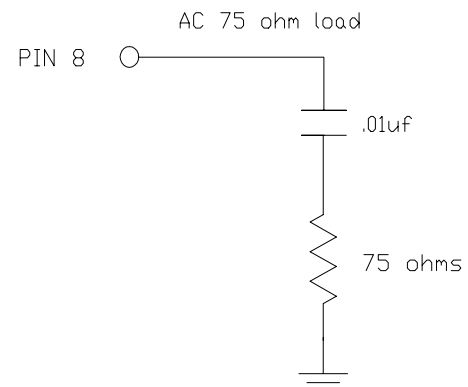
#### Input Voltage

Code Specification  
A 3.3V  
5V

#### Tolerance/Performance

0  $\pm 100$ ppm 0-70°C  
1  $\pm 50$ ppm 0-70°C  
7  $\pm 25$ ppm 0-70°C  
9 Customer Specific  
A  $\pm 20$ ppm 0-70°C  
B  $\pm 50$ ppm -40 to +85°C  
C  $\pm 100$ ppm -40 to +85°C

#### Test Load:



**FREQUENCY  
CONTROLS, INC.**

357 Beloit Street, P.O. Box 457, Burlington, WI 53105-0457 U.S.A. Phone 262/763-3591 FAX 262/763-2881

Email: [nelsales@nelfc.com](mailto:nelsales@nelfc.com) [www.nelfc.com](http://www.nelfc.com)