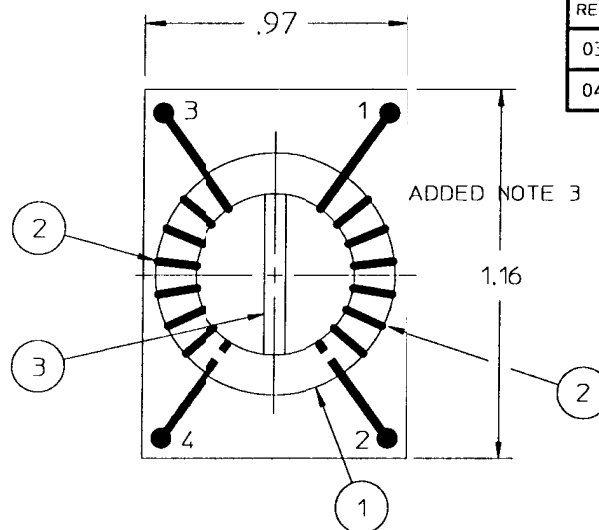


# VICOR CONFIDENTIAL

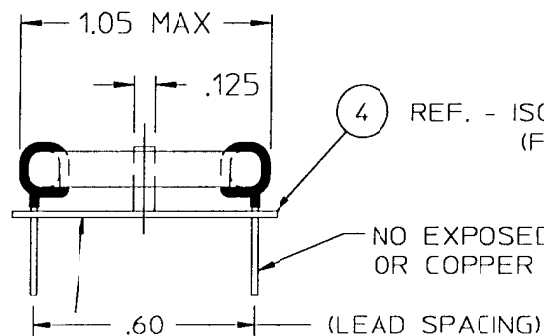
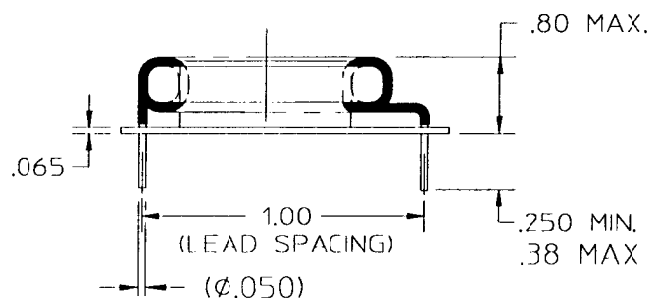
THIS DOCUMENT AND THE DATA DISCLOSED HEREIN OR HEREWITH IS NOT TO BE REPRODUCED, USED, OR DISCLOSED IN WHOLE OR IN PART TO ANYONE WITHOUT PERMISSION OF VICOR CORP.

REV.	DESCRIPTION	DATE	APPROVED
03	REVISED PER E980XXX	JMR 5/98	DPK
04	REVSD- E990408	RCM 9/10/99	DPK

REF. - ISOLATION INSULATOR (FR4) - SEE NOTE 2.



ADDED NOTE 3



REF. - ISOLATION INSULATOR (FR4) - SEE NOTE 2.

NO EXPOSED INSULATION OR COPPER

MARK THIS SURFACE "02134 REV & DATE CODE"

## NOTES:

1. ASSEMBLY TO BE FREE OF NICKS.
2. ITEMS #3 & #4 SUPPLIED BY VENDOR @ ASS'Y.
3. ALL PARTS FLAME RATED MIN. U.L. 94V-0.
4. MAX. LEAKAGE INDUCTANCE: 10.2  $\mu$ H
5. LEAKAGE INDUCTANCE: SHORT PIN 3 TO 4, MEASURE LEAKAGE INDUCTANCE FROM PIN 1 TO 2.
6. SEE BOM 02134 FOR A LIST OF PARTS.

**COPY**  
ORIGINAL  
ONLY WHEN STAMPED  
IN RED

TEST	ITEM NO.	WINDING	NO. OF TURNS	IND.(mH)	DC RES (m $\Omega$ )
10 KHz @ 11.6 mV	2	1 PRI.	10 TURNS	.845 - 1.570	7 MAX.
	2	1 PRI.	10 TURNS	.845 - 1.570	7 MAX.

DRAWN BY	DATE
	4/98
UNLESS OTHERWISE SPECIFIED DIMENSIONS ARE IN INCHES. TOLERANCES ARE:	
FRACTIONS	DECIMALS
1/64	.01
XXX	.005
THIRD ANGLE PROJECTION	
DO NOT SCALE DRAWING	

VICOR			
CHOKER ASSY.DWG.,COMMON MODE FLTR.			
12 AMP RMS 10TH 16/10TH 16			
SIZE	FSCM NO.	DWG NO	REV
B	67131	18768	04
SCALE	NONE	SHEET 1 OF 1	